

Possible cause:

This error can occur with the new hardware (E1130), because the error limit can respond due to hardware tolerances, although everything is OK.

This adjustment has been considered in the firmware for some time, but it will be overwritten if you import an older configuration file that still has the old thresholds.

NOTE:

Check the parameter requires an RS232 programming cable and the Linmot software. Do not change any parameters without advise from CanMan!

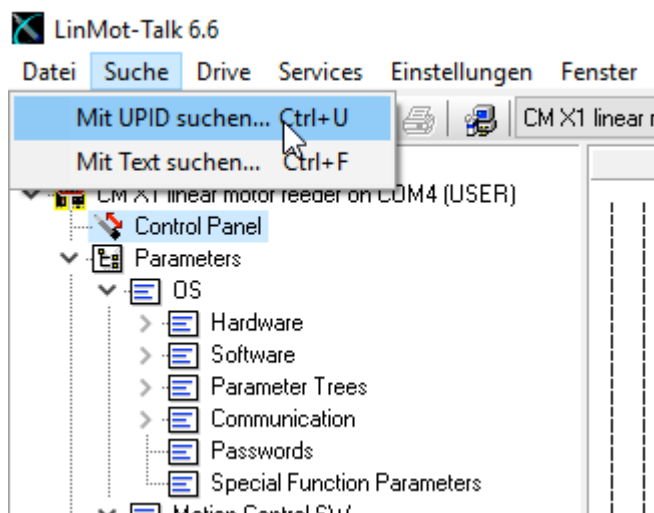
The following values must be observed:

Parameter	UPID	Actual Value	Recommended ...	Parameter Path
<input checked="" type="checkbox"/> Phase Voltage Low Level	102Ch	5.2734375V	2.5390625V	Motion Control SW\Drive Configuration\Monitoring\Motor Supply Voltage\Phase Switch On Test\Phase Voltage Low Level
<input checked="" type="checkbox"/> Phase Test Max Input Current	102Eh	0.201652484A	2.01652484A	Motion Control SW\Drive Configuration\Monitoring\Motor Supply Voltage\Phase Switch On Test\Phase Test Max Input Current

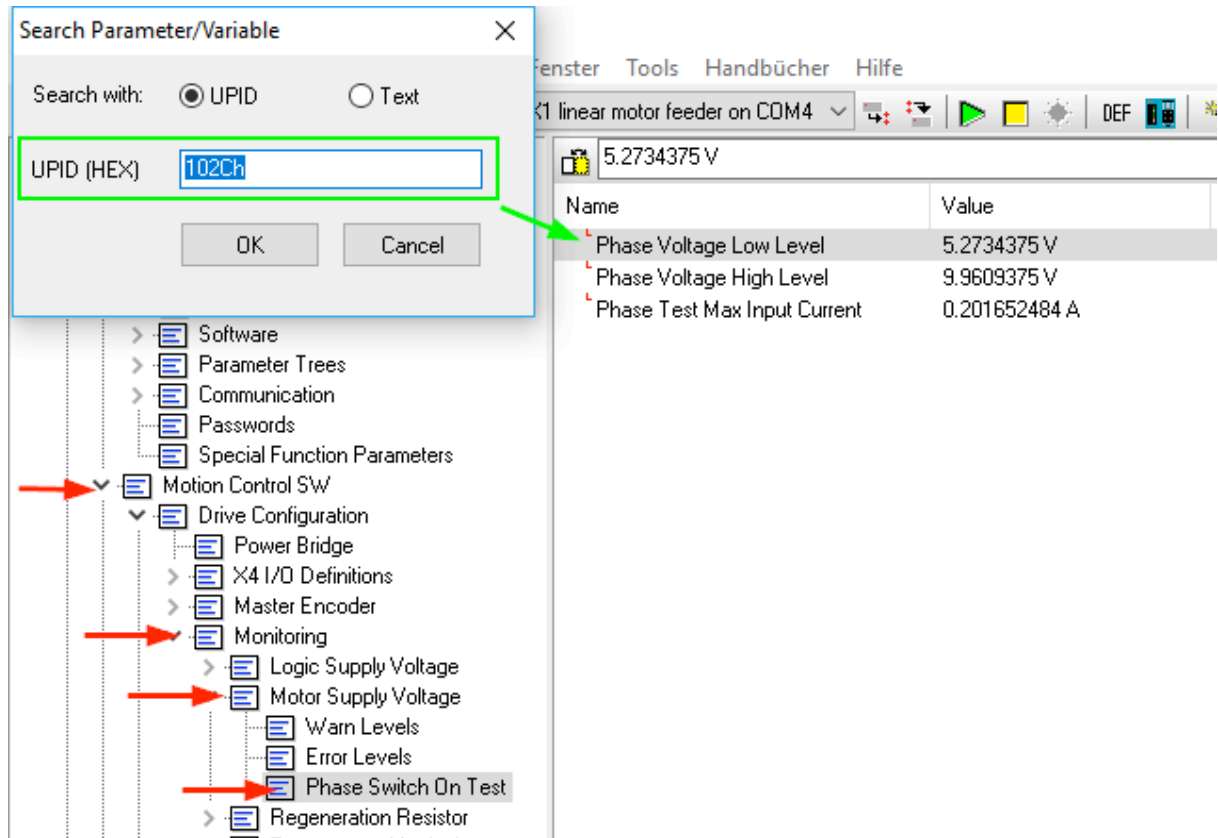
UPID: 102Ch should be set to 2.5390625V

UPID: 102Eh should be set to 2.01652484A

With the function: Search -> Search with UPID...



The corresponding parameter is displayed and can be adjusted manually:



The screenshot shows the CAN MAN software interface. A 'Search Parameter/Variable' dialog box is open, with 'UPID (HEX)' selected and the value '102Ch' entered. The main window displays a tree view of parameters under 'Motion Control SW' and 'Drive Configuration'. A table on the right shows the search results for the parameter '5.2734375 V'.

Name	Value
Phase Voltage Low Level	5.2734375 V
Phase Voltage High Level	9.9609375 V
Phase Test Max Input Current	0.201652484 A